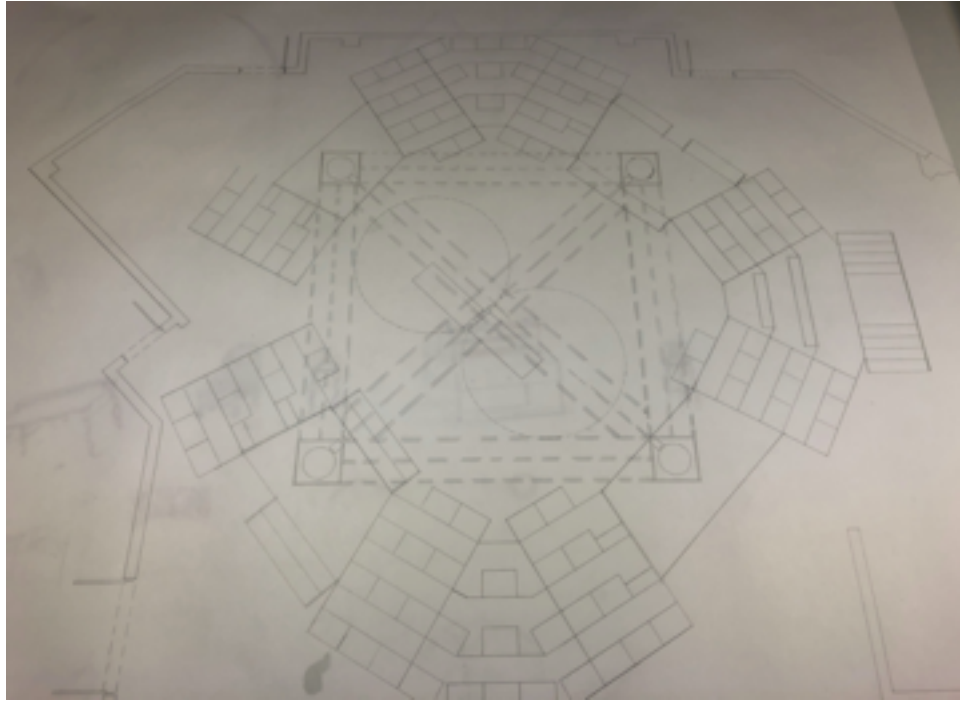


PHOTOGRAPH 51

by Anna Ziegler

A thesis production for Avital Shira

Set design by Adam Hawkins



Early floorplan for *Photograph 51* as designed by Adam Hawkins



Final set model for *Photograph 51* as designed by Adam Hawkins

We conceived of the piece as a memory play, set in the ruins of a lab that has been lost to memory, as Rosalind herself has been. Plagued by guilt, Wilkins conjures Rosalind back to the space so that they can finally tell her story and figure out, once and for all, how their collaboration went awry and why it was Watson and Crick, and not they, who received credit.